



OIL PAINTING FROM LIFE

Workshop
With Alisa Semenova
At Rignana Estate

19th to 26th June 2027



COURSE DESCRIPTION



This workshop is designed as a relaxed yet focused introduction to painting from life, combining portrait and landscape studies in the unique atmosphere of Tuscany.

Over five days, participants will create one or two portrait studies as well as several small landscape paintings, working directly from observation. The course is suitable for all levels, with individual guidance provided throughout.

The main focus will be on understanding light, color relationships, and building form. Students will learn how to approach painting in a direct, intuitive way capturing the essential character of the subject rather than overworking details.

Through demonstrations and one-on-one feedback, Alisa will guide participants in developing a more confident and expressive approach to painting.

The goal of the workshop is not only to improve technical skills, but also to enjoy the process of painting in a beautiful and inspiring environment.

ABOUT ALISA SEMENOVA



Alisa Semenova is a contemporary realist painter specializing in figurative work and portraiture. She graduated from the Ilya Repin Academy of Arts in Saint Petersburg in 2023, where she received a rigorous academic training in drawing and oil painting.

Her work is rooted in academic tradition while embracing a more painterly and expressive approach. She is particularly interested in light, tonal relationships, and the subtle psychological presence of the model.

Alongside her studio practice, Alisa regularly teaches workshops across Europe and Asia, focusing on alla prima portrait painting and the study of light, color, and form.

DAILY SCHEDULE

Daily Rhythm

Each day includes:

8:30– 9:30 Breakfast

10:00-13:00 Workshop Session

13:00–14:00 Farm to table lunch at Rignana

14:30-16:30 Workshop Session

19:00 Wine Aperitivo followed by dinner

Wednesday is a Class break, where you can Stay at Rignana and relax or explore the towns and cities of Tuscany.



MATERIALS TO BRING

Mediums & Painting

Materials:

- Odorless painting medium
- Thinner + varnish option (e.g. damar varnish or similar)
- Optional additional brush cleaner
- Small metal palette cups (clip-on type for palette)
- Disposable paper palettes

Oil Paints

- Titanium White
- Lemon Cadmium or Indian Yellow
- Light Ochre
- Natural Sienna (optional)
- English Red
- Transparent Mars Orange / Transparent Red Oxide (Red Oxide Transparent)
- Light Cadmium Red
- Umbra (Burnt Umber or similar)
- Van Dyke Brown
- Bone Black (Ivory Black / Bone Black)
- Cobalt Blue Hue (Royal Blue)
- Ultramarine
- Emerald Green

Brushes & Tools

- Flat brushes (mainly recommended)
- Bristle and synthetic brushes
- Sizes from small to large (approx. 4–20)
- Rags / cloths for wiping brushes
- Soap (solid bar soap for cleaning brushes)

Supports (Canvas & Drawing Surfaces)

- 5–10 painting supports per participant (depending on workflow)• Small to medium canvases
- Canvas on cardboard panels (oil-ready)
- Small stretched canvases on stretcher bars
- Oil sketchbooks / oil paper sketchbooks (prepared for oil painting)
- Optional sketchbooks for studies
- Pencils, colored pencils, and pastels for preliminary sketches

Note: Participants can mix different support types (canvas, panels, sketchbooks). This flexibility is encouraged depending on working speed and personal approach.

ACCOMMODATION



RIGNANA ESTATE

IN THE HEART OF TUSCANY

We would be delighted to welcome you to our home, **Rignana Estate**, an 150-acre estate surrounded by **vineyards** and **olive groves**, where **alpacas** and **horses** graze freely. Our retreats are an immersive experience where you can cultivate your creativity with like minded people, connect with the natural world and taste the flavours of Tuscany through our **farm-to-table meals** paired with wine from our vineyards.



THE ESTATE MAP

Pool



Tiki Bar



Church House



Dining Area



Church Courtyard



Tennis Court



Art Studio



Stone Cottage Horses & Machu and Picchu





FACILITIES

RENAISSANCE CHURCH

Refine your technique in our
Renaissance church studio.



FACILITIES

TENNIS COURT

An astroturf tennis court with a view, providing the perfect opportunity for both recreational and competitive play. Sit on the stone wall and watch a tennis tournament.



FACILITIES

INFINITY POOL

The 18x8m marble pool with large spaces to sunbathe or practice yoga, a vine pergola that provides ample shade. By the pool, a Tiki bar offers a relaxed setting for refreshments.



THE KITCHEN

ORGANIC LIVING

Authentic Tuscan meals are prepared by Alessandra using organic ingredients from Rignana Estate's garden and local farms. Enjoy seasonal, farm-to-table dishes alongside organic wine, olive oil and fresh eggs, produced on-site.

Experience the art of pizza making with a pizza party by the pool.





BEDROOMS

June 19th - 26th 2027 (7 nights)

Suite - Master bedroom, Living room, mezzanine bedroom & bathroom:

Two people: €4,150

Extra person: €1,000 each

Superior bedroom with ensuite:

Single occupancy: €2,890

Shared occupancy: €3,890 for two people

Bedroom with ensuite:

Single occupancy: €2,590

Shared occupancy: €3,590 for two people

Bedroom with shared bathroom:

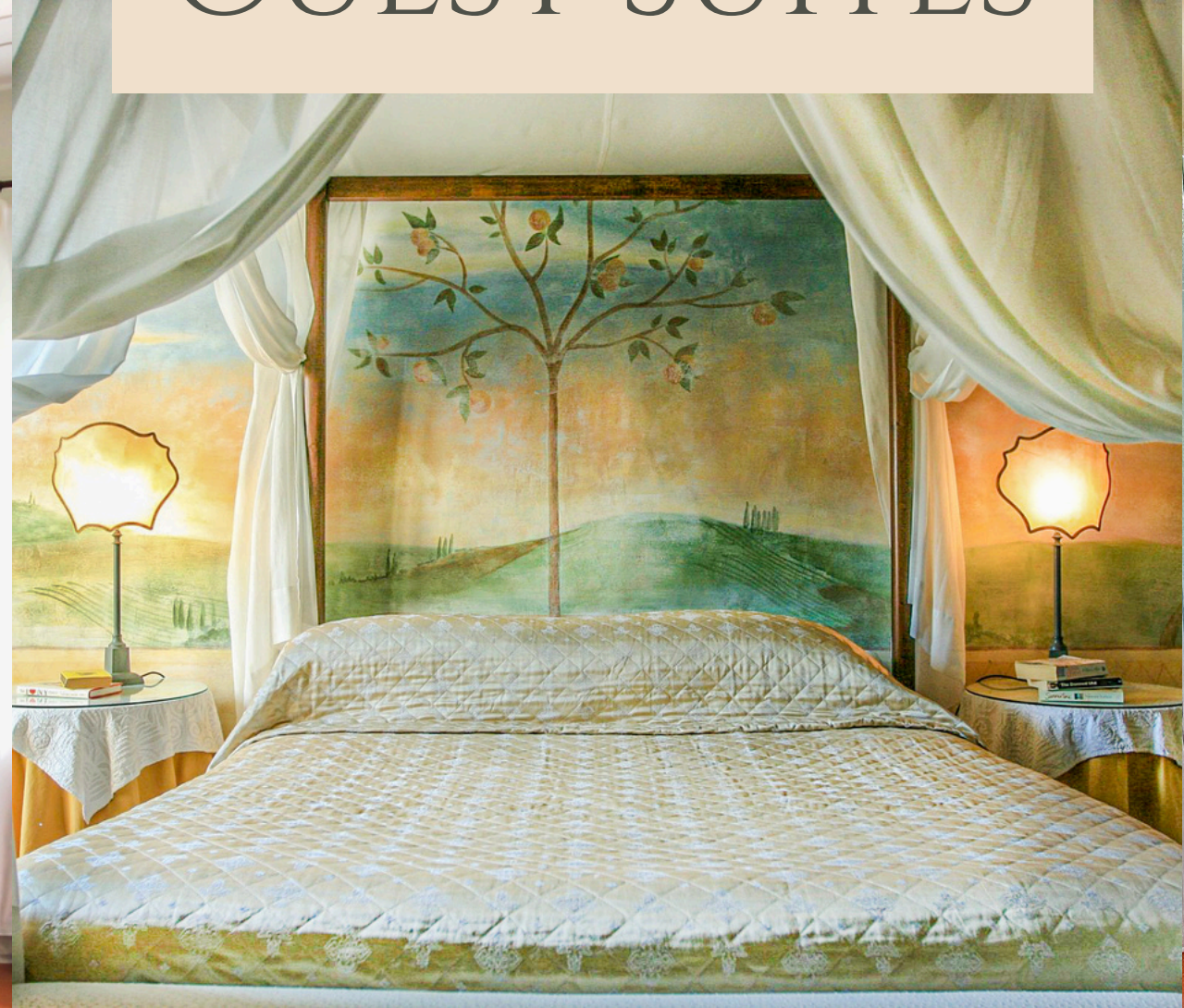
Single occupancy: €2,295

Shared occupancy: €3,295 for two people

Workshop fee for participants: €350



GUEST SUITES



WHAT'S INCLUDED

- 7 nights accommodation
- Daily breakfast, 5 lunches, 6 dinners
- Daily Aperitivo
- Pizza making experience
- Towels & Linens
- Transfers
- Infinity pool
- Tennis court
- Wifi
- Laundry facilities
- VAT tax



WHAT'S NOT INCLUDED

- City tax (€2 per person per day to be paid in cash on arrival)
- Materials

OPTIONAL ADD-ONS

- Treatments (Massage) - these can be requested
- Wine Tours

PRACTICAL INFORMATION

Dates

19 - 26 June 2027

Check-in and check-out

On 19 June you are very welcome at Rignana Estate from 16:00.

Check-out on 26 June is before 10:00.

Address

Rignana Estate, Rignana 8, Greve, in Chianti
Toscana, Italy 50022 Firenze

Travel

Our transfer to the venue will collect you on the first day of the workshop from Florence Santa Maria Novella train station between 15:00 & 16:00. You must confirm in advance if you plan to meet the transfer. If you are unable to make this time you can reach the estate by taxi from Florence or a bus to Greve and taxi from there. Our transfer from the venue will take you back on the final day of the workshop to Florence Santa Maria Novella train station, departing from the venue before 10am.



HOW TO GET TO RIGNANA ESTATE

Travel to Italy

By Air to **Florence**: Florence Airport (Peretola) is the closest airport to Rignana Estate. The estate is a 50minute drive from Florence airport

By Air to **Pisa**: Alternatively, you can fly into Pisa International Airport. From Pisa, you can connect to Florence by bus, train, or taxi.

From Florence to Rignana Estate

By Car: Renting a car is the most convenient way to reach Rignana Estate. From Florence, it's an approximately 40-minute drive to the Estate.

Alternatively, we can search for the most convenient price for a taxi or minibus taxi service for you.



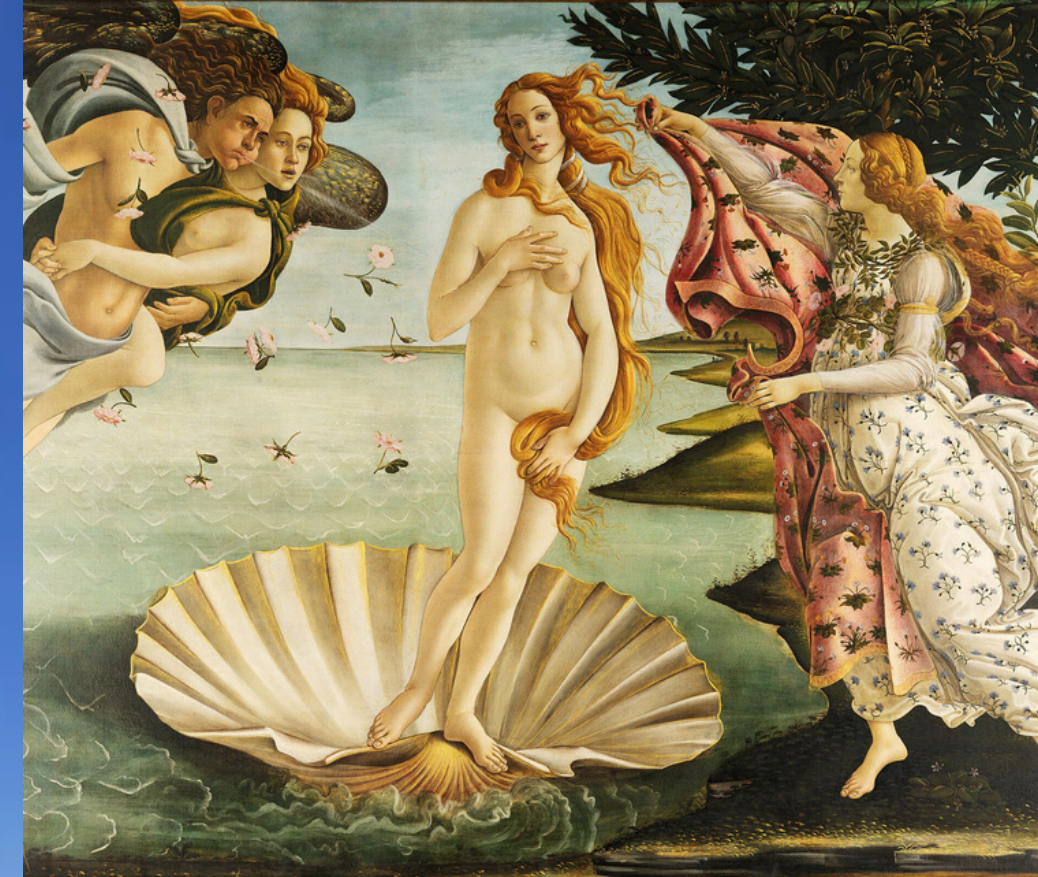
PRIME LOCATION HIGHLIGHTS

Just 40 minutes from Florence, Rignana Estate offers the perfect balance of tranquility and accessibility.

Nearby, charming villages like Greve and Panzano invite exploration, while world-class wineries such as Antinori nel Chianti Classico provide unforgettable tasting experiences.

We highly recommend a visit to the monastery of Badia A Passignano, home to Ghirlandaio's Last Supper. A tour with one of the monks is a must!

Walking and cycling is popular in the area. The primary walking route passing through the Rignana area is the historic Via Sanese, a leg of the ancient pilgrimage route leading to the Via Francigena, offering hilly treks through vineyards and olive groves.



CONTACT US

ANY QUESTIONS PLEASE GET IN TOUCH!

ACCOMMODATION

BOOK@RIGNANA.ESTATE
+39 393 620 2164

PAINTING

SEMENOVAALISA59@GMAIL.COM



WE HOPE TO WELCOME YOU SOON

Martino and Alessandra
book@rignana.estate
+39 393 620 2164